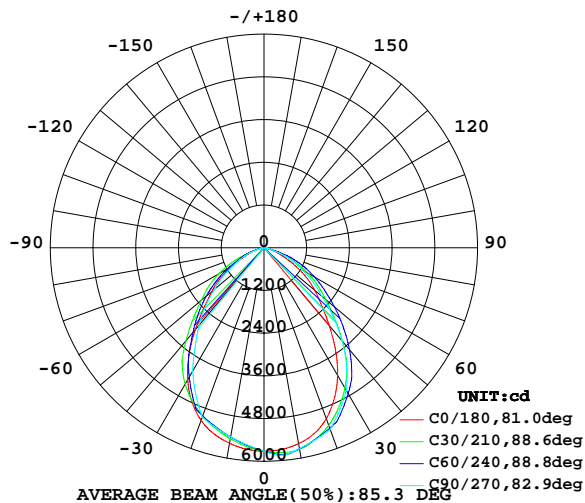


LUMINAIRE PHOTOMETRIC TEST REPORT

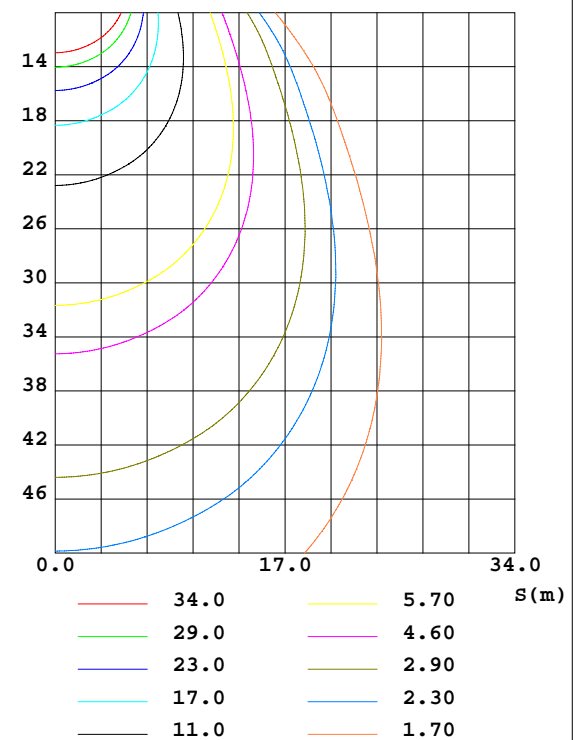
Test:U:219.9V I:0.5440A P:117.2W PF:0.9790 Lamp Flux:11589.7x1 lm		
NAME: LED Module Floodlight(TITAN)	TYPE:	WEIGHT:8
SPEC.:	DIM.:	SERIAL No.:
MFR.: Sedna LED Ltd	SUR.:	PROTECTION ANGLE:

DATA OF LAMP		PHOTOMETRIC DATA Eff: 98.89 lm/W			
MODEL	SDMFL-120	I _{max} (cd)	5848	S/MH(C0/180)	1.14
NOMINAL POWER(W)	118	LOR(%)	100.0	S/MH(C90/270)	1.08
RATED VOLTAGE(V)	220	TOTAL FLUX(lm)	11590	η UP,DN(C0-180)	0.0,47.6
NOMINAL FLUX(lm)	11589.7	CIE CLASS	DIRECT	η UP,DN(C180-360)	0.0,52.4
LAMPS INSIDE	1	η up(%)	0.0	CIBSE SHR NOM	1.25
TEST VOLTAGE(V)	219.9	η down(%)	100.0	CIBSE SHR MAX	1.30

LUMINOUS INTENSITY DISTRIBUTION DIAGRAM



C0 PLANE ISOLUX DIAGRAM (UNIT:lx)



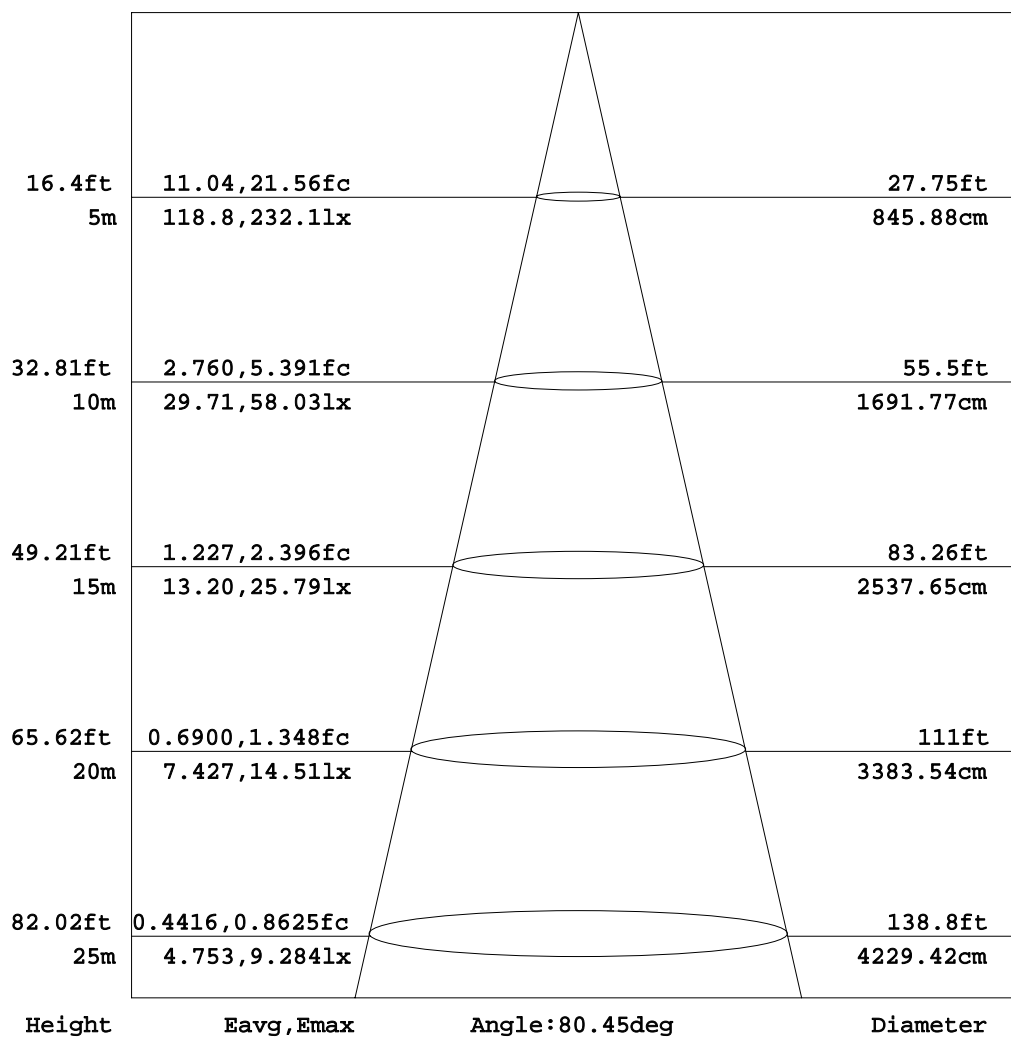
C Range: 0 - 360DEG
 C Interval: 5.0DEG
 Test Speed: MEDIUM
 Temperature:25DEG
 Operators:Mei Yuanping
 Test Date:2013-10-30

γ Range: 0 - 90DEG
 γ Interval: 0.5DEG
 Test System:EVERFINE GO-2000B_V1 SYSTEM V2.0.279
 Humidity:90.0%
 Test Distance:7.860m [K=1.0000]

AAI Figure

Test:U:219.9V I:0.5440A P:117.2W PF:0.9790 Lamp Flux:11589.7x1 lm		
NAME: LED Module Floodlight(TITAN)	TYPE:	WEIGHT:8
SPEC.:	DIM.:	SERIAL No.:
MFR.: Sedna LED Ltd	SUR.:	PROTECTION ANGLE:

Flux out:6808 lm



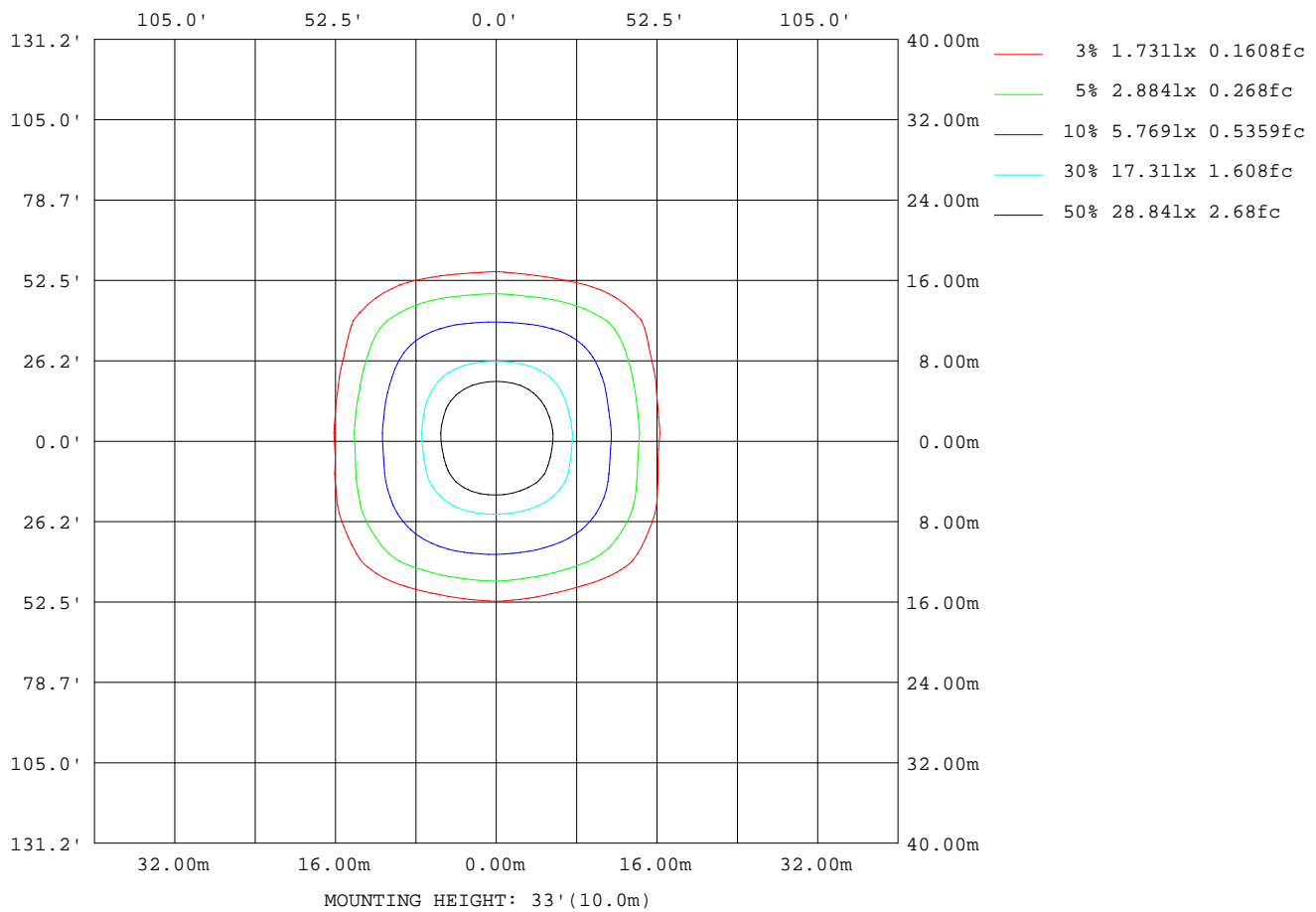
Note: The Curves indicate the illuminated area and the average illumination when the luminaire is at different distance.

C Range: 0 - 360DEG
 C Interval: 5.0DEG
 Test Speed: MEDIUM
 Temperature: 25DEG
 Operators: Mei Yuanping
 Test Date: 2013-10-30

γ Range: 0 - 90DEG
 γ Interval: 0.5DEG
 Test System: EVERFINE GO-2000B_V1 SYSTEM V2.0.279
 Humidity: 90.0%
 Test Distance: 7.860m [K=1.0000]

ISOLUX DIAGRAM

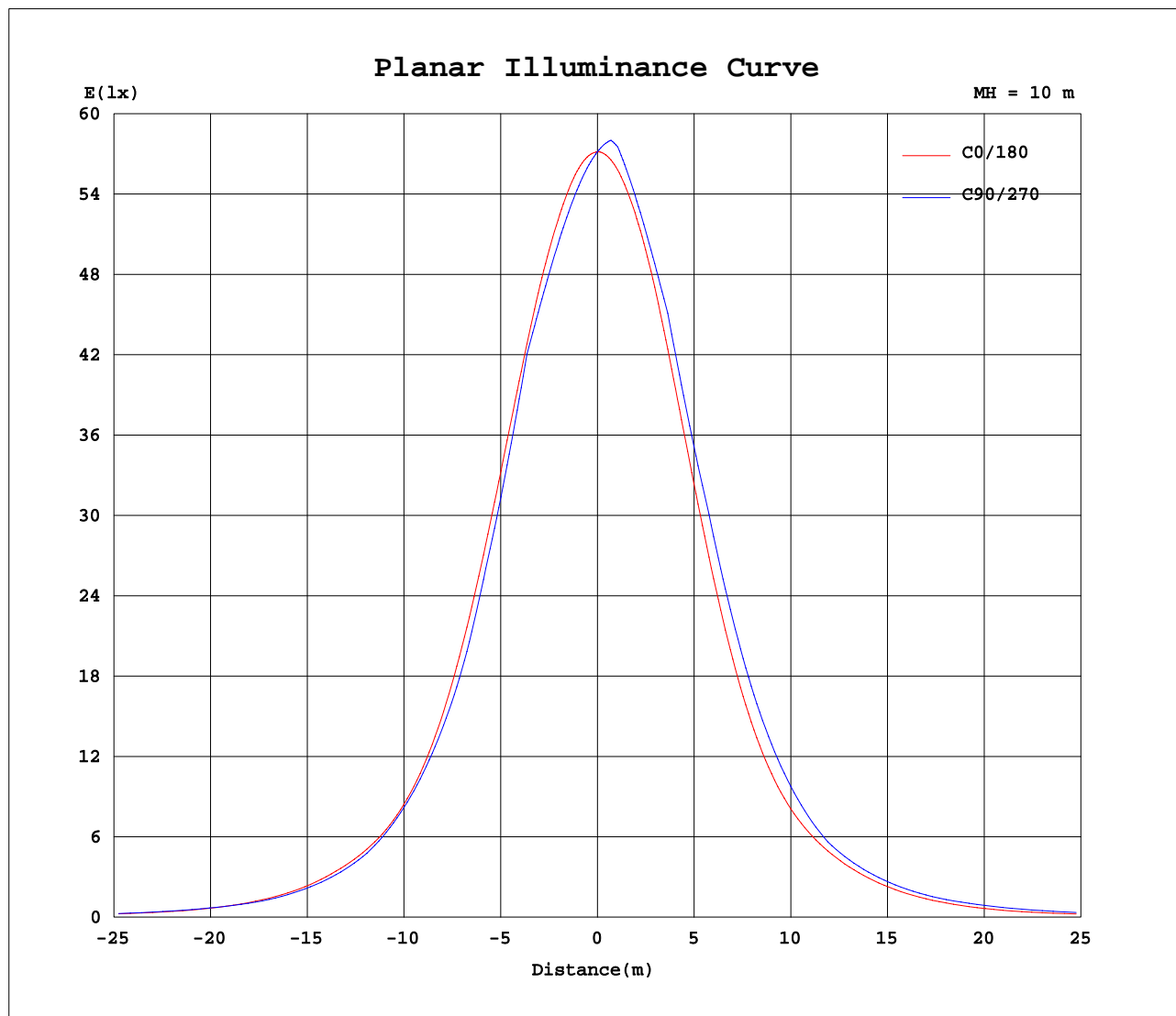
Test:U:219.9V I:0.5440A P:117.2W PF:0.9790 Lamp Flux:11589.7x1 lm		
NAME: LED Module Floodlight(TITAN)	TYPE:	WEIGHT:8
SPEC.:	DIM.:	SERIAL No.:
MFR.: Sedna LED Ltd	SUR.:	PROTECTION ANGLE:



C Range: 0 - 360DEG
 C Interval: 5.0DEG
 Test Speed: MEDIUM
 Temperature: 25DEG
 Operators: Mei Yuanping
 Test Date: 2013-10-30

γ Range: 0 - 90DEG
 γ Interval: 0.5DEG
 Test System: EVERFINE GO-2000B_V1 SYSTEM V2.0.279
 Humidity: 90.0%
 Test Distance: 7.860m [K=1.0000]

Planar Illuminance Curve



C Range: 0 - 360DEG
C Interval: 5.0DEG
Test Speed: MEDIUM
Temperature: 25DEG
Operators: Mei Yuanping
Test Date: 2013-10-30

γ Range: 0 - 90DEG
 γ Interval: 0.5DEG
Test System: EVERFINE GO-2000B_V1 SYSTEM V2.0.279
Humidity: 90.0%
Test Distance: 7.860m [K=1.0000]