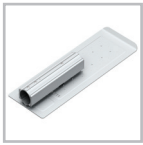


# SEDNA<sup>®</sup>

l i g h t i n g



\*option SDSPT-A



## SKY™ LED Slimline Post-top

SKY™ series post-top is a minimalistic slimline LED luminaire designed for column/post mounting at heights of 4 - 12m, with a range of sizes across 30W - 150W (3300-16,500lm). IP67 design for exterior environments, with a low-profile, sleek silver anodised aluminium body for harsh weather environments, SKY™ is for urban applications such as car-parks, pathways and pedestrian areas. PMMA optic lens ensures a high degree of uniformity across a range of spaces and reduced light spillage, thus further enhancing this 110lm/W luminaire to give optimum lux levels throughout. Furthermore, SKY™ series luminaire compatible with standard mains photocells.

Additional benefits as well as +65,000hour maintenance free performance, include minimal disturbance to nocturnal wildlife to the lack of UV/IR spectrum associated with LED photometric characteristics.

Unit complete with cover plate for both 40mm & 60mm side-entry hence universally compatible. Furthermore, compatible with part number SDPST-A, adjustable street light adaptor for 60-70mm columns which can also be used for angle adjustment of luminaire around 120°.

### Product information

Durable with rated life span of +65,000 hours / No UV or IR emissions / Instant Illumination & Flicker free / CE & RoHS international standards / Environmentally friendly & part recyclable: no mercury or other hazardous materials used / Heavy duty diecast aluminium housing & 2mm toughened PMMA optics / Complies with EN60598

Code	Nominal Size	Lumen Output	Power Consumption	Weight	Equivalent
SDSPT-030	366mm x 135mm x 85mm	3,300lm	30W	2.1 KG	35W SOX
SDSPT-040	366mm x 135mm x 89mm	4,300lm	40W	2.2 KG	70W SON
SDSPT-060	431mm x 160mm x 89mm	6,500lm	60W	2.5 KG	150W SON/70W MHL
SDSPT-090	431mm x 160mm x 89mm	9,800lm	90W	3.5 KG	150W MHL
SDSPT-120	631mm x 215mm x 89mm	13,400lm	120W	4.5 KG	250W SON
SDSPT-150	431mm x 160mm x 89mm	16,400lm	150W	5.5 KG	400W SON/250W MHL

### Technical Specifications

Beam Angle: 65° x 135° (30W)  
80° x 150° (40W+)

Luminous Efficacy: up to 110lm/W

Input Voltage: 100-280V AC

High Colour Rendering Index: >80Ra

Mounting: Ø40/60mm side-entry

Power Factor: ≥0.96

LED Type: SMD3030 LEDs

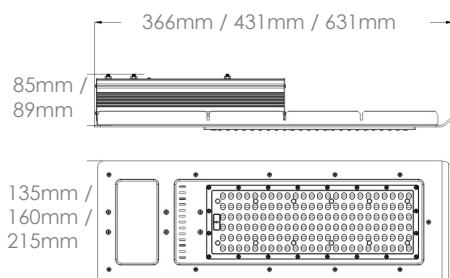
Operating Temperature: -20°C to 50°C

Colour Temperature: CW 6500-7000K (Others on request)

Available in the following lumen finishes:



Other colours are available on request



## LED SKY™ Series

### Slimline LED Post-top Luminaire

Cool White