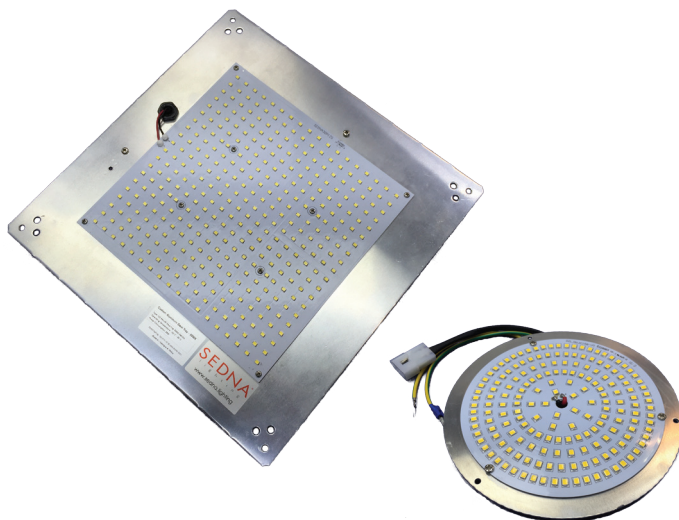
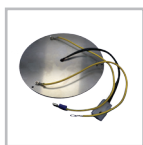


# SEDNA®

l i g h t i n g



omni LED Light Engines
5Yr
Part L Consultant
IP21
M3/NM3
DIMMABLE DALI / 1-10V



## Custom / Bespoke LED Retrofit Gear Tray

Economical upgrade of existing luminaires with ease with our bespoke LED Retrofit gear tray options. Custom made to bespoke sizes, lumen packages, colour temperatures, dimming options & emergency options, the retrofit gear trays can be manufactured in a variety of options to suit almost every application, from wallpack, in-ground light to bulkhead & linear luminaires.

Designed to be installed directly into existing luminaires with ease & minimal modifications, saving on time, labour and cost as removes the need for expensive re-wiring and re-running of cables, as well as reduced waste which is typically minimised to just an existing lamp. Further benefits include minimised burden of long-term maintenance & ensure serviceability of luminaire.

Additional options of dimmable: DALI (-DL) / 1-10V (-AD), as well as built-in microwave sensor (-MI) for occupancy detection, or external mount PIR sensor for occupancy detection and daylight dimming (-PIR) functionality. 3-hour emergency version - maintained (M3) / non-maintained (NM3) also available with self-test and LED indicator light (SDCGT-XXXX-EM).

### Product information

Rated life span of +45,000 hours / No UV or IR emissions / Immediate start & flicker free / Environmentally friendly & part recyclable: no mercury or other hazardous materials / Lightweight Galvanised RAL White steel housing / M3/NM3 Emergency version also available / Optional built-in microwave detection / Optional external mount PIR sensor with daylight dimming function & occupancy detection

Code	Nominal Size	Lumen Output	Power Consumption	LED Quantity	Equivalent
SDCGT-XXX	CUSTOM / BESPOKE	CUSTOM/BESPOKE	CUSTOM/BESPOKE	CUSTOM/BESPOKE	CUSTOM/BESPOKE

Available in the following lumen finishes:



Warm White



Natural White



Pure White



Cool White

Other colours are available on request

## Technical Specifications

Luminous Efficacy: up to 160lm/W

Input Voltage: 100-280V AC

High Colour Rendering Index Up to 95Ra

Light Engine Type: OMNI® Light Engines

Operating Temperature: -20°C to 50°C

Colour Temperature: WW 2800-3000K  
 NW 4000-4500K  
 PW 5500-6000K  
 CW 6500-7000K