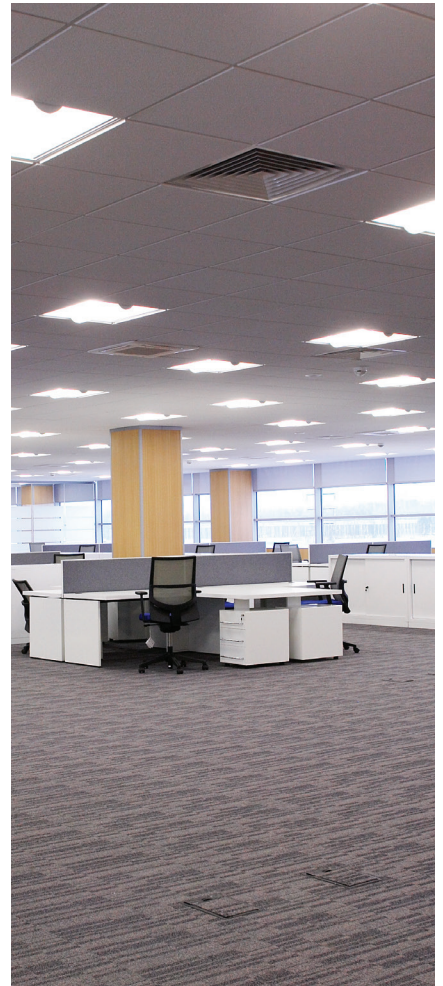
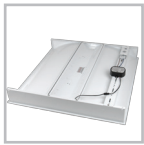


SEDNA[®]

l i g h t i n g



LED Apex™ - 600mm x 600mm / 600mm x 1200mm

Standard T-bar ceiling grids for general commercial spaces such as office, are highly suited to the high uniformity and **anti-glare recessed PMMA diffuser assisting in LG3/LG7 compliance** with a high degree of uniformity.

Utilising a **series of OMNI@light engines, luminaire benefits from industry leading efficacy of 95lm/W**, with added benefit of long-term maintenance & serviceability of luminaire possible.

Further options of dimmable: DALI (-DL) / 1-10V (-AD), as well as built-in microwave sensor (-MI) for occupancy detection, or built-in PIR sensor (-PIR) for occupancy detection and daylight dimming functionality. 3-hour emergency version - maintained (M3) / non-maintained (NM3) also available with self-test and LED indicator light (SDAPEX-EM).

Product information

Rated life span of +45,000 hours / No UV or IR emissions / Immediate start & flicker free / Environmentally friendly & part recyclable: no mercury or other hazardous materials / Lightweight galvanised RAL white steel housing / PMMA anti-glare diffuser / M3/NM3 Emergency version also available / Optional built-in microwave detection / Optional external mount PIR sensor with daylight dimming function & occupancy detection

Code	Nominal Size	Lumen Output	Power Consumption	Light Engine	Equivalent
SDAPEX	595mm x 595mm x 95mm	3,100lm	36W	3 x SDOMNI-560	4 x 18W T8
SDAPEX-12	1195mm x 595mm x 95mm	5,200lm	60W	3 x SDOMNI-1140	4 x 36W T8

Available in the following lumen finishes:



Pure White

Other colours are available on request

Technical Specifications

Beam Angle: 120°

Luminous Efficacy: up to 95lm/W

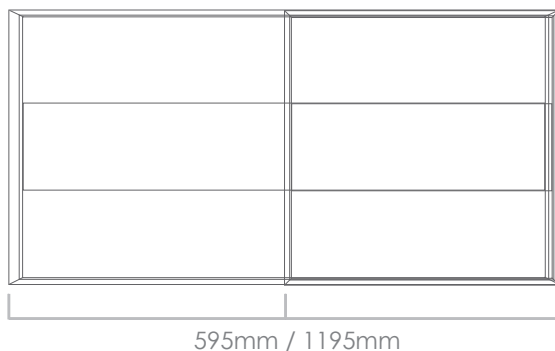
Input Voltage: 100-280V AC

High Colour Rendering Index >80Ra

Light Engine Type: OMNI@ Light Engines

Operating Temperature: -20°C to 50°C

Colour Temperature: PW 5500-6000K
(Others available on request)



LED Apex™ Series

36W / 60W

Pure White