

SEDNA®

l i g h t



Flexible LED Strip - 24V Double

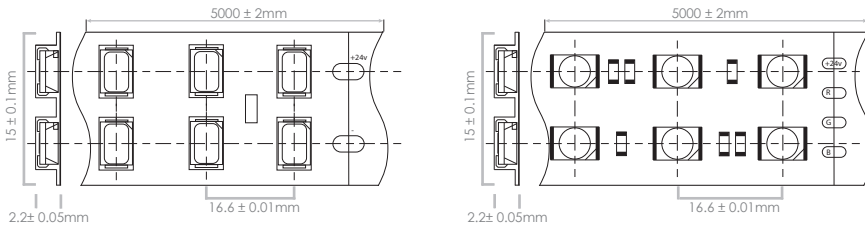
Flexible double LED strips are ideal when a greater luminosity is required than that of single strips. With 2 rows of long life Epistar 3528 or 5050 ultra bright LEDs, mounted on a 15mm wide flexible PCB (printed circuit board), accent lighting is ideal for easy application with maximum **single colour luminosity**. 240 Epistar 3528 LEDs per metre achieve a **high lumen output of 1200 - 1300 lumens per metre**. Likewise, 5050 LEDs are capable of up to 70 lumens per Watt, with operating efficiency at 28.8 Watts per metre. Standard 3M™ adhesive backing or mounting clips making installation in a variety of complex environments simple. Supplied in 5metre rolls, strips can be cut at 50mm intervals, tailoring the length to suit your application. A range of 24V power supplies and suitable controllers are stocked dependant upon requirements (please refer to table below for details).

Product Information

Rated life span of +30,000 hours / 5 metre rolls / Dimmable (using dimmable low voltage PSU) / Minimum bend radius of 25mm / No UV or IR emissions / Low temperature operation / 3M™ adhesive backing

Code	Size	Lumen Output	Power Consumption	LED Quantity	LED Type
SDFS-3528-240	15mm x 5000mm	1200 - 1300lm/m	19.2W/m	240pcs/m	3528 SMD
SDFS-5050-120	15mm x 5000mm	1900 - 2000lm/m	28.8W/m	120pcs/m	5050 SMD

Available in the following stock lumen finishes:



Distance	Power Supply Unit	
	SMD 3528	SMD 5050
≤3m	PSU-60B-24	PSU-100B-24
3m - 5m	PSU-100A-24	PSU-150A-24
5m - 10m	PSU-350A-24	PSU-350A-24

Technical Specifications

Beam Angle: 120°

Operating Voltage: DC 24V

Dimming / RGB controller

LED Type: Epistar 3528 / 5050 LEDs

Operating Temperature: -20°C to 50°C

Colour options: -RGB (16 million colours)

- Single colour: Red
- Blue
- Green
- Amber
- Warm White
- Cool White



Next Day Delivery

Flexible LED Strip

24V Double Strip

Single Colour / RGB